

Date: **25.5.2026** Time: **18:00 hrs**

Subject: **COC COMMUNICATION NO: 2** Document No: **3.2**

From: *The Clerk of the Course*

To: *All competitors / crew members*  
*Number of pages 2*

## **IMPORTANT REMINDERS TO ALL COMPETITORS**

- 1. Reconnaissance tracking system (RSLite app) must be kept active at all times when the reconnaissance car is driven (also on road sections) and the smartphone must be kept charged.** Any misuse will be reported to the Stewards (see Art. 9.2.3 of the Supplementary Regulations). This applies also for the Route Note Crews using the same tracking system during the rally (see Art. 12.26.2 of the Supplementary Regulations).
- All drivers are strongly reminded that all exhibition driving is strictly prohibited as stipulated in Art. 12.21 of the Supplementary Regulations. This includes doughnuts, drifting and any other driving that may cause a dangerous situation. All infringements will be reported to the Stewards.
- Competitors are reminded of 2026 FIA WRC Sporting Regulations Art 29.5.3: the display of tyre brands other than Hankook on cars, clothing or service areas is not permitted.  
  
Competitors are also reminded that the dimensions for the Tyre company branding on the cars has changed from the previous supplier and the stickers on all corners of the car are **33.5 cm** wide. Standardised stickers will be available from the Hankook Tyre Technical Area or at Scrutineering where checks will be made.  
  
Non-compliance may be reported to the Stewards.
- All priority 2 and 3 drivers must run at least one passage on the Shakedown as required by Article 36.2.3. of the 2026 FIA WRC Sporting Regulations and by Art. 12.2 of the Supplementary Regulations. **P2, P3 and non-priority drivers may run a maximum of two passages on the Shakedown.**
- Rally car's **extinguisher system must be armed**. This will be checked throughout the rally by the scrutineers and all infringements will be reported to the Stewards who may impose a penalty.  
**Please note a change for 2026:** All cars must be fitted with **two** fire extinguishers in compliance with 2026 ISC Appendix J Articles 253-7.3.2 to 7.3.5 or with FIA Standard 8865-2015. As from 01.01.2026, **both** manual extinguishers must be High Voltage compatible (see Article 266-23).
- Drivers must ensure that they **wear their safety equipment properly on special stages all the way until the STOP control** (helmets, FHR and seat belts fastened, balaclava inside the overall, overall zipper closed, driver's gloves worn etc.). All infringements will be reported to the Stewards who may impose a penalty.  
**Please see 2026 FIA WRC Sporting Regulations, Article 53.1.**
- Any crew which has the red "SOS" sign displayed to them, or which sees a car which has suffered an accident and the OK sign is not shown, shall immediately and without exception stop to render assistance. Any crew stopping on a special stage and who does not require immediate medical assistance, must activate the OK display in the FIA safety tracking device within one minute and show the OK sign to all other cars. All infringements will be reported to the Stewards who may impose a penalty. **Please see 2026 FIA WRC Sporting Regulations, Article 53.3.**

8. **All crews that are shown the Red Flag must immediately slow down and continue that lowered speed until the finish of the stage.** The Red Flag can be a physical one shown at radio points or an electronic one sent to the FIA safety tracking device. The electronic Red Flag must be acknowledged by the crew. All infringements will be reported to the Stewards who may impose a penalty. **Please see 2026 FIA WRC Sporting Regulations, Article 53.5.**

9. **Refuel Zones**

All crews are reminded to comply with **2026 FIA WRC Sporting Regulations, Articles 61.2.7 and 61.2.8:**

- |   |
|---|
| <p><b>61.2.7</b> The use of mobile phones and radio communications is forbidden while in a RZ</p> <p><b>61.2.8</b> It is required that the crew remain outside the car during refuelling.</p> |
|---|

Taking pictures with a mobile phone is therefore not allowed at the Refuel Zones

10. **Frontal head restraint**

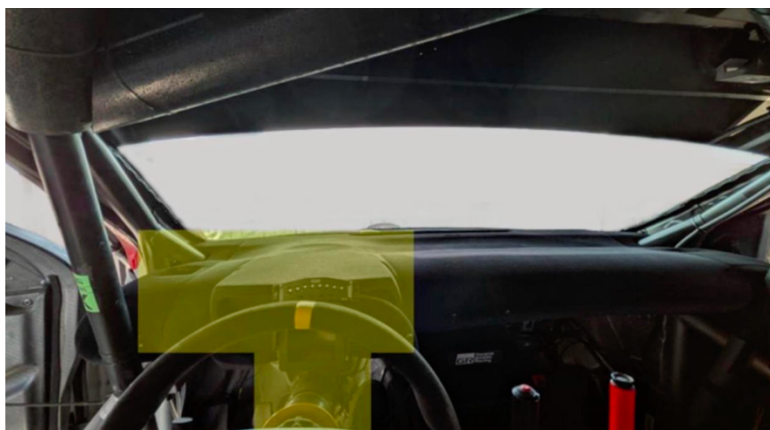
For your own safety and as reminder, ensure that your FHR (Hans or Hybrid) and your belts are well installed. Please check the video links below to ensure that your FHR straps are well and tight adjusted in order to limit the risk of serious injury.

[ASN Safety Bulletin #15 Hybrid](#)

[ASN Safety Bulletin #14 HANS](#)

**INSTALLING THE REMOTE LED DEVICE**

Please note the requirements regarding the positioning of the Remote LED Device: The RLD shall be mounted in clear view, directly in front of the driver so that the device and its warnings can be observed easily while competing at speed during a stage. When mounted near the steering wheel, care must be taken to ensure the steering wheel does not obstruct the driver's view of any LEDs in the normal driving position. Acceptable installation positions are limited to the areas defined by the yellow boundaries:



嘉屋賢二  
Kenji Kaya  
Clerk of the Course